

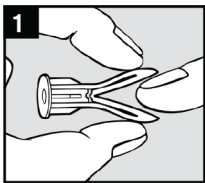


Mounting Instructions Models 3120, 3130, 2120

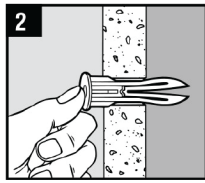
- For wall**shoulders**® Model 2120 only: Install hooks provided into the two pre-drilled outer holes making sure the hooks are pointing up then tighten screws with a hand screwdriver.

Next:

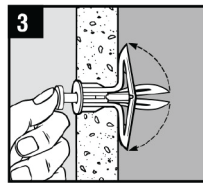
- Locate desired accessible wall space to store your apron. Select the mounting template that corresponds to the Model of wall**shoulders**® you are installing.
- Position and mark two pre-drilled mounting holes down the center of the wall**shoulders**® mounting template.
- For hollow wall (sheetrock) installation, use the approved **TOGLER**™ hollow wall anchors which are provided. Follow illustrations below for additional mounting instructions.



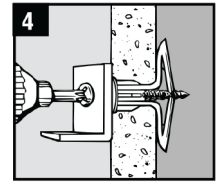
1 Drill 5/16" (8mm) hole.
Fold anchor in middle.



2 Insert anchor in hole and
tap flush with wall.



3 Insert key to pop anchor
open behind hollow wall
(not necessary for thick or
solid walls). Do not force
or hammer key. In solid
walls (or in a stud),
the anchor works as
an expansion anchor:



4 Place item over anchor.
Insert screw and tighten
until screw is flush with
fixture (wallShoulders®
brackets). Then, stop.

TOGLER & typeface and TC are worldwide registered trademarks of Mechanical Plastics Corp. wall**shoulders**® is a registered trademark of DeBroeck Co., Inc. ©2002, 2012 MPC.

- Put washers onto the provided (2) 8x2" stainless steel screws. Insert through the wall**shoulders**® into anchor. Tighten using hand screwdriver.
- For installation into wall stud or framing, pre-drill mounting pilot holes using a 1/8" drill bit. Put washers onto the provided (2) 8x2" stainless steel screws and insert through the pre-drilled holes. Tighten using hand screwdriver.

NOTE: Damage could occur from over tightening.

By following these instructions you will enjoy a solid, secure installation of your new wall**shoulders**®

LIMITED WARRANTY

Your wall**shoulders**® is covered by a conditional, limited warranty to the original purchaser. Your wall**shoulders**® is warranted to be free from defects in materials and workmanship under normal use and conditions for a period of twelve (12) months from the date of original purchase (proof of purchase required). If your wall**shoulders**® unit malfunctions or fails within the aforementioned warranty period because of a defect in materials and workmanship, we will repair or replace it at our discretion. A warranty return must be sent in the original packaging, freight and insurance prepaid with a copy of this Limited Warranty certificate and proof of purchase to DeBroeck Company, Inc. at the address set forth below.

This Limited Warranty is valid only for a wall**shoulders**® purchased in the U.S. This limited warranty does not extend to any defect, malfunction, or failure caused by misuse, abuse, improper installation (including disassembly of a wall**shoulders**®), use of the product with equipment for which it was not intended or unauthorized alterations or repairs.

This Limited Warranty is the sole and exclusive express warranty given with respect to wall**shoulders**® and all other express warranties are hereby excluded.

NEITHER DEBROECK COMPANY, INC. NOR THE DEALER WHO SELLS wall**shoulders**® IS RESPONSIBLE FOR INDIRECT, INCIDENTAL, SPECIAL, PUNITIVE, OR CONSEQUENTIAL DAMAGES ARISING OUT OF THE USE OF OR INABILITY TO USE THIS PRODUCT. EXCEPT FOR THIS LIMITED WARRANTY, THE MANUFACTURER HAS NOT MADE, AND SPECIFICALLY DISCLAIMS, ANY WARRANTY OR REPRESENTATION OF ANY KIND, EXPRESS OR IMPLIED, DIRECT OR INDIRECT, OR PRODUCT FITNESS FOR A PARTICULAR PURPOSE.

Any claims to this limited warranty must be brought within one (1) year. If any portion of this warranty or limitation of rights and remedies is found to be unenforceable, then the remainder of this document shall remain in full force and effect. Washington law shall govern all claims.

WARRANTY REPLACEMENT POLICY

We offer a one (1) year product warranty against defects. To fulfill this, we will need the following emailed to us at returns@wallshoulders.com:

- A copy of the Purchase Invoice to verify the unit is within the one year purchase stipulation.
- A photo of the broken unit to determine what has caused the damage.
- Phone number and point of contact if more information is required.

Once we have this information we can review and, if approved, send out the replacement unit. If you are outside of the warranty period or it is determined the unit has broken due to misuse or improper mounting, you can order another unit from your preferred medical supply company.

RETURN POLICY

We do not accept returns directly. Any return of undamaged units, within 30 days of the original purchase, will need to be arranged through the medical supply company with which you ordered the unit. For damaged or defective units refer to our warranty replacement policy at: <http://wallshoulders.com/installation.html>.

DeBroeck Company, Inc.

PO Box 414

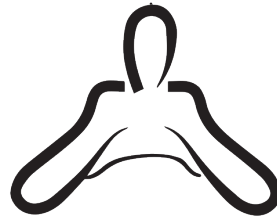
Walla Walla, WA 99362

www.wallshoulders.com

Email: info@wallshoulders.com

Tape to Mounting Surface

Tape to Mounting Surface



wallshoulders®

MOUNTING TEMPLATE

1. Locate the desired mounting location.
2. Place the template onto the mounting surface using a piece of tape in each of the corners.

| MASKING TAPE IS RECOMMENDED |

3. Place a level on the template center line and adjust the template as necessary.
4. Locate the proper mounting holes for the model you are installing and mark the center of each hole.
5. Remove the template and proceed with the mounting instructions located on the back.



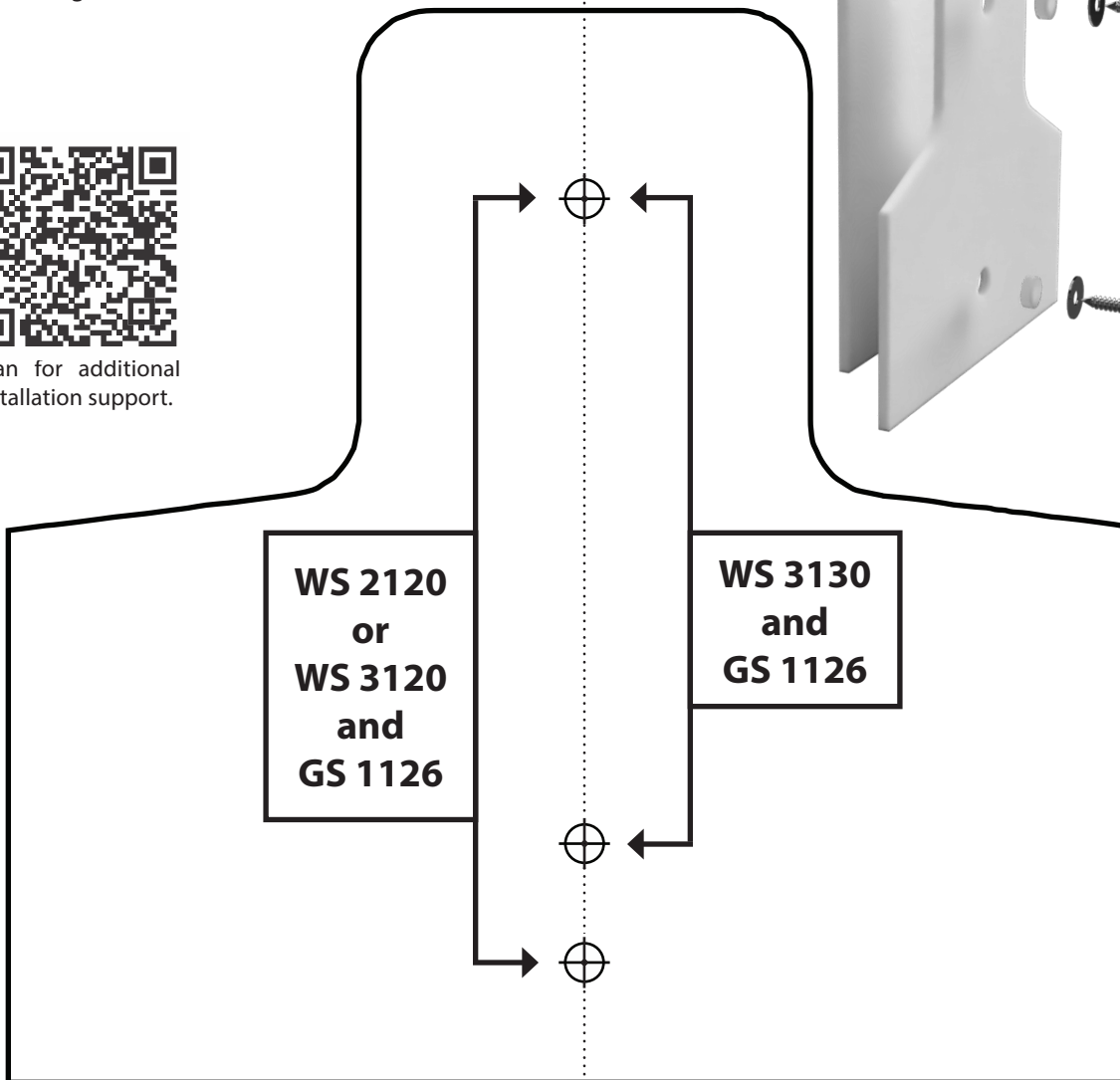
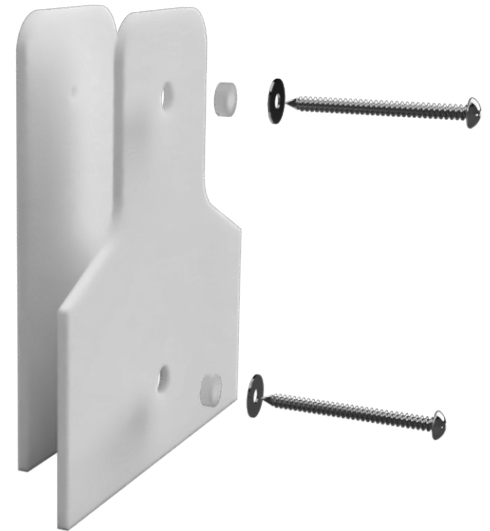
Scan for additional installation support.

MOUNTING THE BACKER PLATE

This plate will be mounted between the wallshoulders® and the wall for additional support when installing.

Place the backer plate flush to the back of the wallshoulders®, properly aligning the holes.

Don't forget to install the stainless steel washer onto the #8x2" provided mounting screw when attaching to the wall.



Tape to Mounting Surface

Tape to Mounting Surface

CENTER LINE